

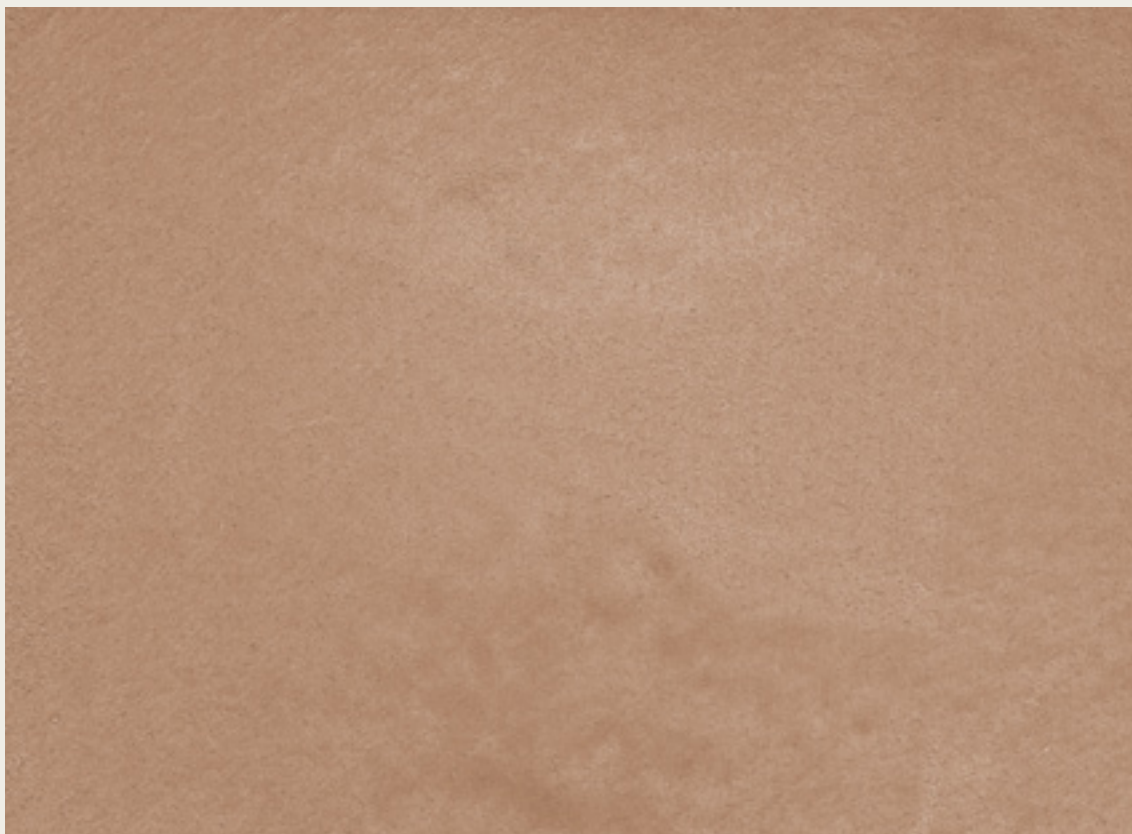
novacolor™
I colori dell'Architettura



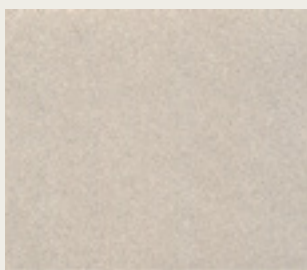
marmorino^{ks}

Marmorino di calce ad effetto satinato e opaco per interni ed esterni
Mineral plaster for silky and matt finishes, interiors and exteriors

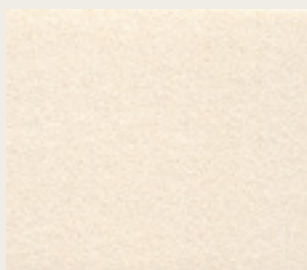




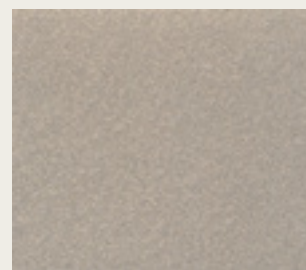
MARMORINO KS MKS 15130* + CERA WAX NEUTRA



MKS 15134



MKS 15135



MKS 15136

MARMORINO KS

IT - Grasso di calce ad effetto satinato per interni ed esterni

Applicare Marmorino KS in due strati con spatola inox, in funzione dell'effetto desiderato.

Resa: 0,8-1 Kg/m² in due strati.

Per maggiori informazioni consultare la scheda tecnica.

EN - Mineral plaster coat with a satin effect for interiors and exteriors

Apply Marmorino KS in two layers with a stainless steel trowel, according to the desired effect.

Yield: 0,8-1 Kg/m² in two layers.

For more information please check the technical data sheet.

FR - Enduit à la chaux à effet satiné pour intérieurs et extérieurs

Appliquer Marmorino KS en deux couches avec truelle inox, en fonction de l'effet désiré.

Rendement: 0,8-1 Kg/m² en deux couches.

Pour plus d'informations consulter la fiche technique.

DE - Feine Spachtelmasse auf Kalkbasis zur Dekoration von Oberflächen im Innen- und Aussenbereich

In zwei Schichten mit Stahlspachtel auftragen und glätten.

Verbrauch: 0,8-1 Kg/m² in den zwei Schichten.

Für weitere Info bitte siehe technisches Merkblatt.

ES - Producto a base de cal con efecto satinado para interiores y exteriores

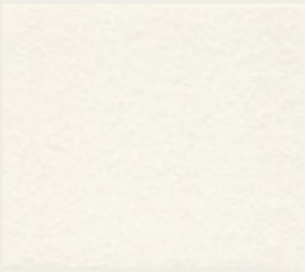
Aplicar Marmorino KS en dos capas con la espátula inox, en función del efecto deseado.

Rendimiento: 0,8-1 Kg/m² en dos capas.

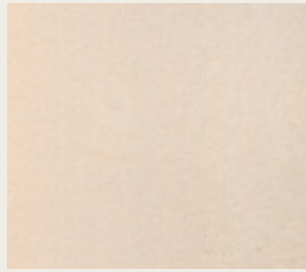
Para mayor información consultar la ficha técnica.



Palácio Condes de Murça, - Lisboa, Portugal
TDRV - Tecnologias de Revestimento
Photo by Ricardo Oliveira Alves Photography



MKS BIANCO



MKS 15145



MKS 15113



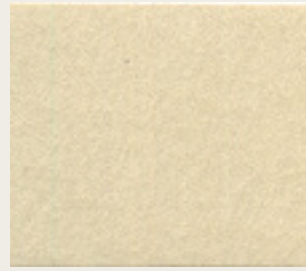
MKS 15104*



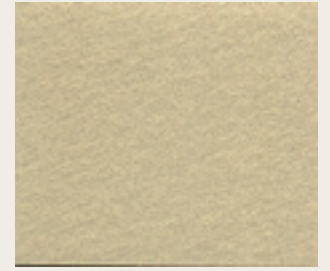
MKS 15124



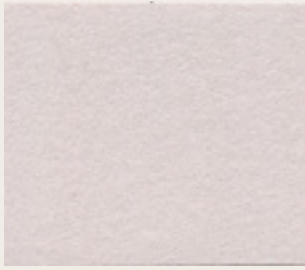
MKS 15119



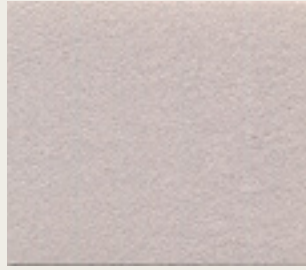
MKS 15129



MKS 15125



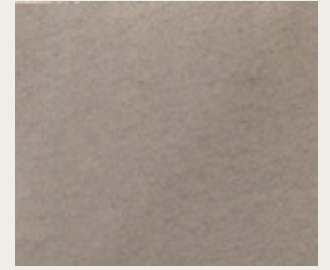
MKS 15116*



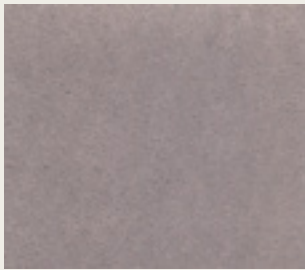
MKS 15108



MKS 15107



MKS 15131*



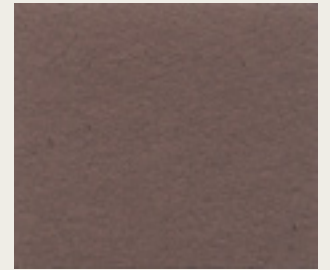
MKS 15103



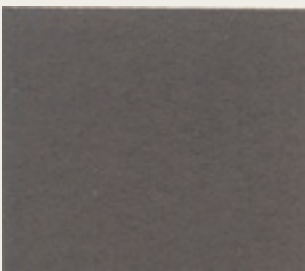
MKS 151117*



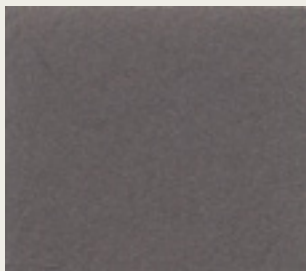
MKS 15105*



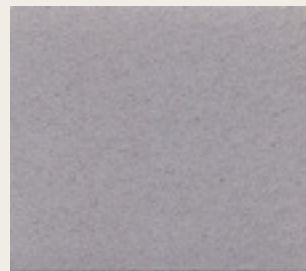
MKS 15115*



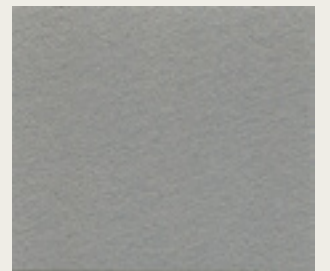
MKS 15146*



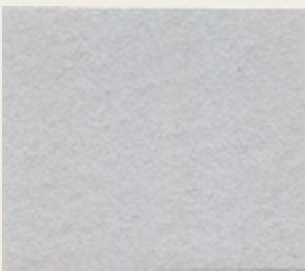
MKS 15111*



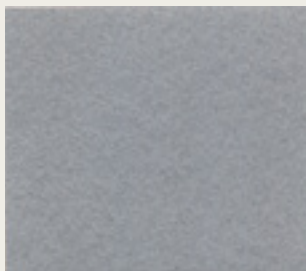
MKS 15101*



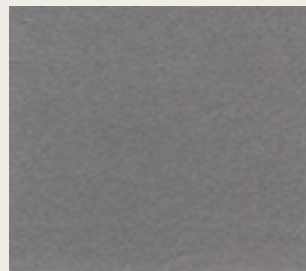
MKS 15141*



MKS 15138



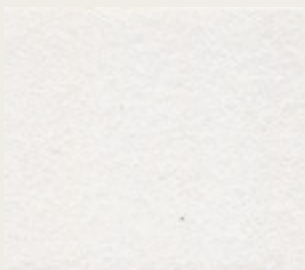
MKS 15137



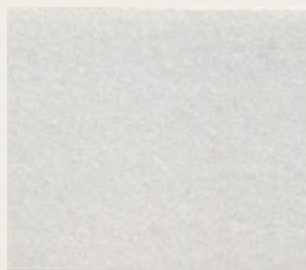
MKS 15144*



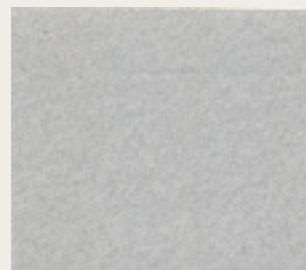
MKS 15132*



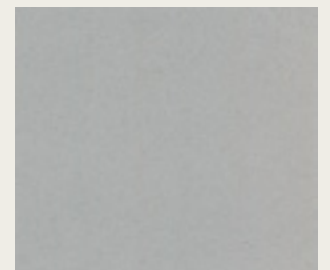
MKS 15139



MKS 15133



MKS 15140



MKS 15142

I colori contrassegnati con * non sono utilizzabili in esterni. Marmorino KS è a base calce: sono possibili leggere variazioni di colore tra la cartella e i lotti diversi di produzione. Si consiglia sempre un unico lotto per ultimare il cantiere. Colours marked with * may NOT be used outdoor. Marmorino KS contains lime therefore slight colour variations between colour card and different batch numbers may always occur. It is highly recommended not to use different batch numbers to finish up the same surface.

www.novacolor.it



firedot

06/2017

N000007

novacolorTM
I colori dell'Architettura

NOVACOLOR srl - 47122 Forlì - Italia
Tel +39 0543 401840 - fax +39 0543 414585
Via U. Aldrovandi, 10 - info@novacolor.it



NOVACOLOR is committed to reduce the environmental impact by producing friendly materials.

Made in Italy

**AZIENDA CON SISTEMA
DI GESTIONE QUALITÀ
CERTIFICATO DA DNV GL
= ISO 9001 =**

**COMPANY WITH
QUALITY SYSTEM
CERTIFIED BY DNV GL
= ISO 9001 =**