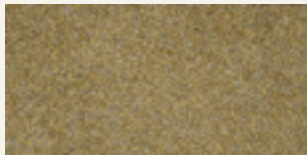


# Dune

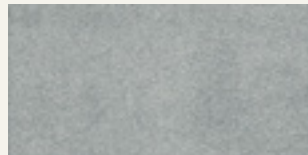
Rivestimento decorativo per interni  
ad effetto metallizzato oro e argento

Decorative architectural trowel-on coating  
with stunning metallic patterns, gold and silver





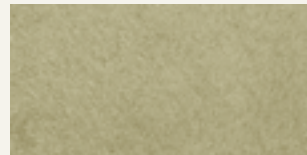
DG 14210



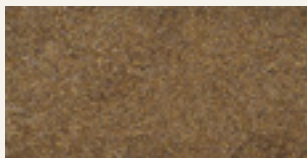
DS 14085



DS 14070



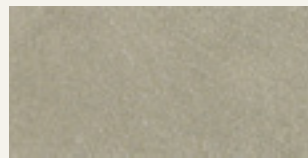
DS 14093



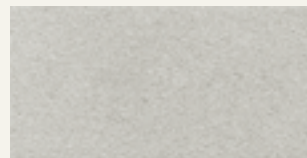
DG 14216



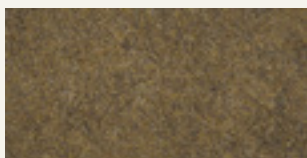
DS 14084



DS 14112



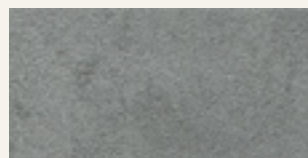
DS 14108



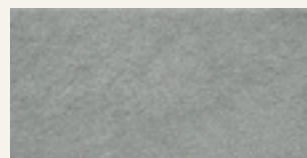
DG 14208



DS 14069



DS 14111

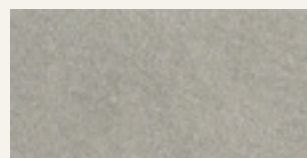


DS 14109

*DUNE*



DS 14076



DS 14113

**IT - Rivestimento decorativo per interni ad effetto metallizzato oro e argento**

Applicare DUNE in due strati, con rullo di pelo corto o spatola inox. Ripassare l'ultimo strato ancora umido con spatola inox o in plastica, per ottenere una soffice damascatura. Resa: 8-10 m<sup>2</sup>/l in due strati. Per maggiori informazioni consultare la scheda tecnica.



DS 14083



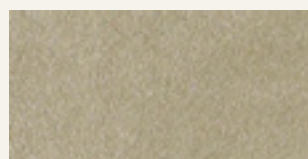
DS 14110



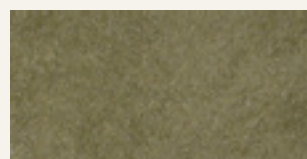
DG 14220



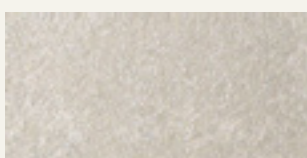
DS 14052



DS 14114



DS 14115



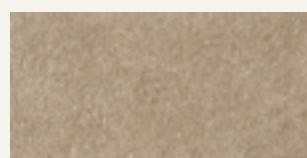
DS 14125



DS 14126



DS 14127



DS 14128



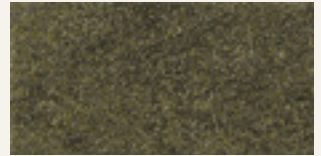
DS 14079



DS 14080



DS 14105



DG 14213



DS 14094



DS 14102



DS 14096



DG 14211



DS 14098



DG 14228



DS 14097



DG 14209



DS 14100

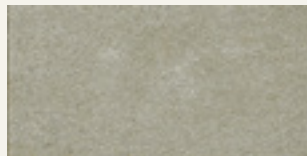


DS 14116

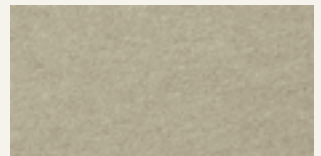
*DUNE*

EN - Decorative architectural trowel-on coating with stunning metallic patterns, gold and silver

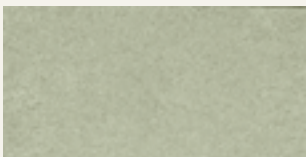
Apply DUNE in two layers with a short hair mohair roller or a stainless steel trowel. Compress the second layer while still wet with a stainless steel or plastic trowel. Yield: 8-10 m<sup>2</sup>/l in two layers. For more information please check the technical data sheet.



DS 14101



DS 14095



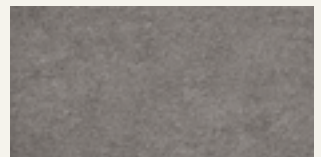
DS 14106



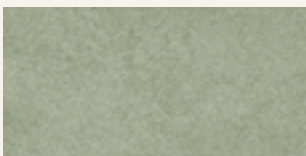
DS 14090



DS 14099



DS 14072



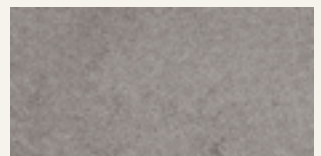
DS 14107



DG 14206



DS 14089



DS 14071







DG 14219



DG 14207



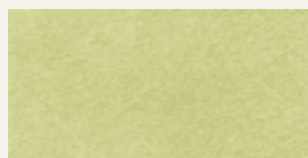
DG 14218



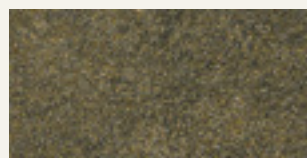
DG 14205



DUNE DG 14203



DS 14103



DG 14212



DG 14204



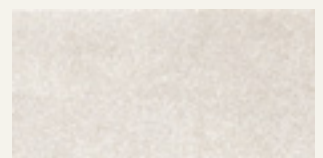
DG 14217



DG 14202



DUNE GOLD



DUNE SILVER



DS 14025



DS 14121

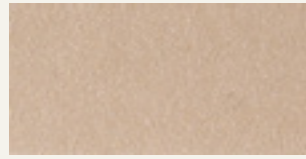


DS 14122

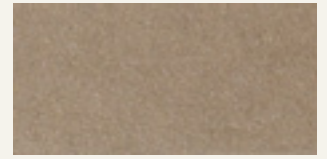


DS 14123

# DUNE



DS 14124



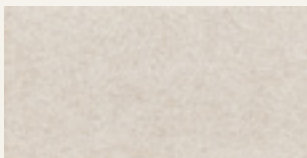
DG 14222



DS 14066



DS 14064



DS 14005



DS 14040

FR - Revêtement décoratif pour intérieurs à effet métallisé or et argent

Appliquer DUNE en deux couches avec rouleau de poil court ou truelle inox. Travailler la dernière couche encore humide avec truelle inox ou en plastique, pour obtenir un souple effet damasqué.

Rendement: 8-10 m<sup>2</sup>/l en deux couches.

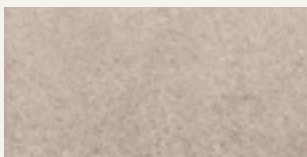
Pour plus d'informations contrôler la fiche technique.



DS 14067



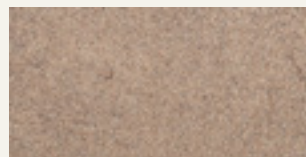
DS 14063



DS 14013



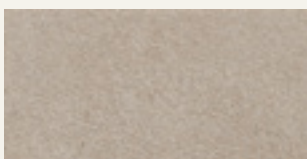
DS 14032



DG 14221



DS 14048



DS 14011



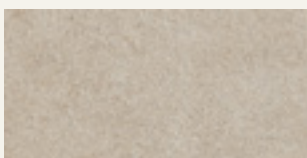
DG 14231



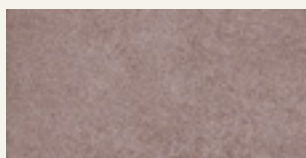
DS 14068



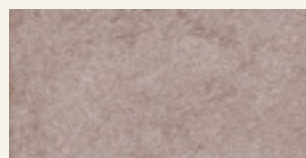
DS 14047



DS 14002



DS 14026



DS 14028



DS 14065





DS 14087



DS 14088



DS 14086



DS 14117



DS 14006



DS 14082



DS 14007



DS 14001



DS 14009



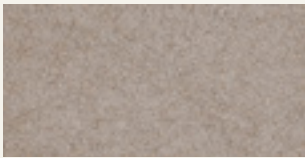
DS 14010



DS 14003



DS 14073



DS 14014



DS 14091



DS 14081



DS 14074



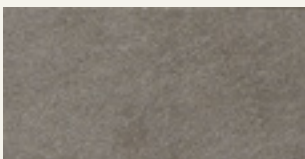
DS 14092

**DE - Dekorative Innen-Wandbeschichtung mit metallisiertem Gold-Silber-Effekt**

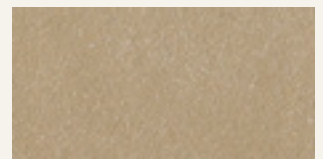
Zwei Schichten DUNE mit einem Roller oder einem Edelstahlspachtel auftragen.  
Mit einem Stahl-oder Kunststoffspachtel über die noch feuchte Oberfläche streichen, und diese so bearbeiten, daß ein leichter Damask-Effekt erhalten wird.  
Ergiebigkeit : 8-10 m<sup>2</sup>/l, in den zwei Schichten.  
Für weitere Info bitte siehe technisches Merkblatt.



DS 14075



DS 14078



DS 14118



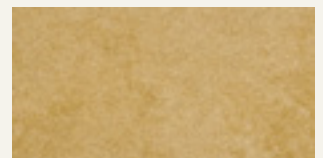
DG 14232



DG 14233

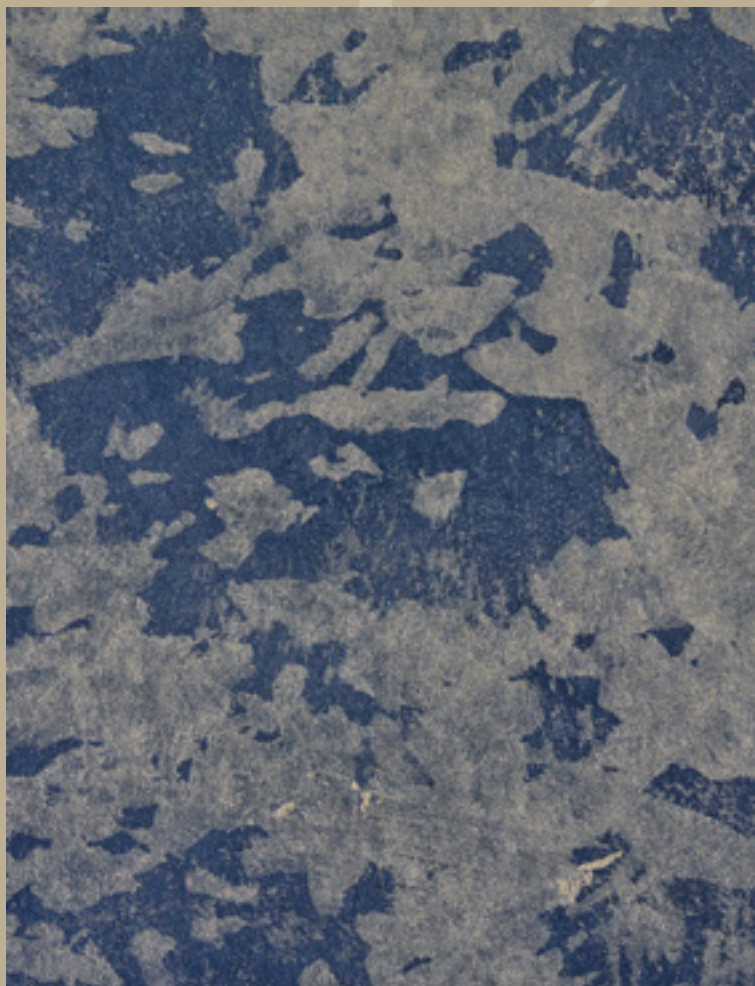


DG 14227



DS 14008

DUNE



DUNE DS 14048 + DS 14091

Giochi di luce e colori riflessi

*Refined reflections of lights and colours*



DG 14224



DS 14119



DG 14215



DS 14120



DG 14225



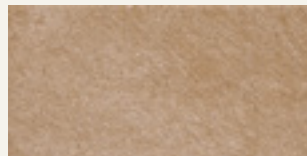
DS 14017



DS 14016

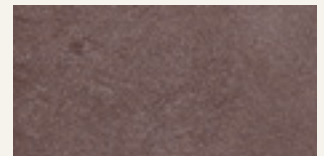


DG 14229

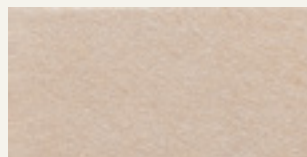


DS 14018

*Dune*



DS 14027



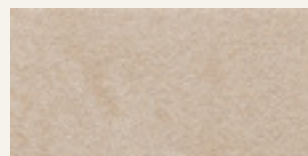
DS 14024



DS 14020



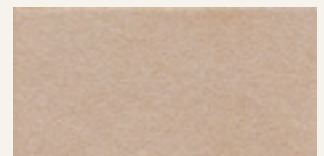
DS 14033



DS 14012



DS 14019



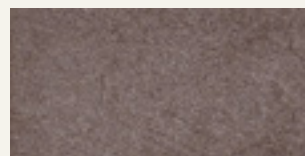
DS 14023



DS 14029



DS 14022



DS 14021



DG 14230

Le tonalità qui riprodotte, pur avvicinandosi a quelle di fornitura, sono indicative. Per una corretta lettura dei colori si raccomanda di consultare questa cartella alla luce solare.  
*The colour shades herein reproduced are purely indicative, as small variations may occur. For a correct reading of the colours it is recommended to examine the catalogue under direct sunlight.*

www.novacolor.it



firedot

1.0/2017

N000098

**novacolor**<sup>TM</sup>  
I colori dell'Architettura

NOVACOLOR srl - 47122 Forlì - Italia  
Tel +39 0543 401840 - fax +39 0543 414585  
Via U. Aldrovandi, 10 - info@novacolor.it



NOVACOLOR is committed to reduce the environmental impact by producing friendly materials.

Made in Italy

**AZIENDA CON SISTEMA  
DI GESTIONE QUALITÀ  
CERTIFICATO DA DNV GL  
= ISO 9001 =**

**COMPANY WITH  
QUALITY SYSTEM  
CERTIFIED BY DNV GL  
= ISO 9001 =**